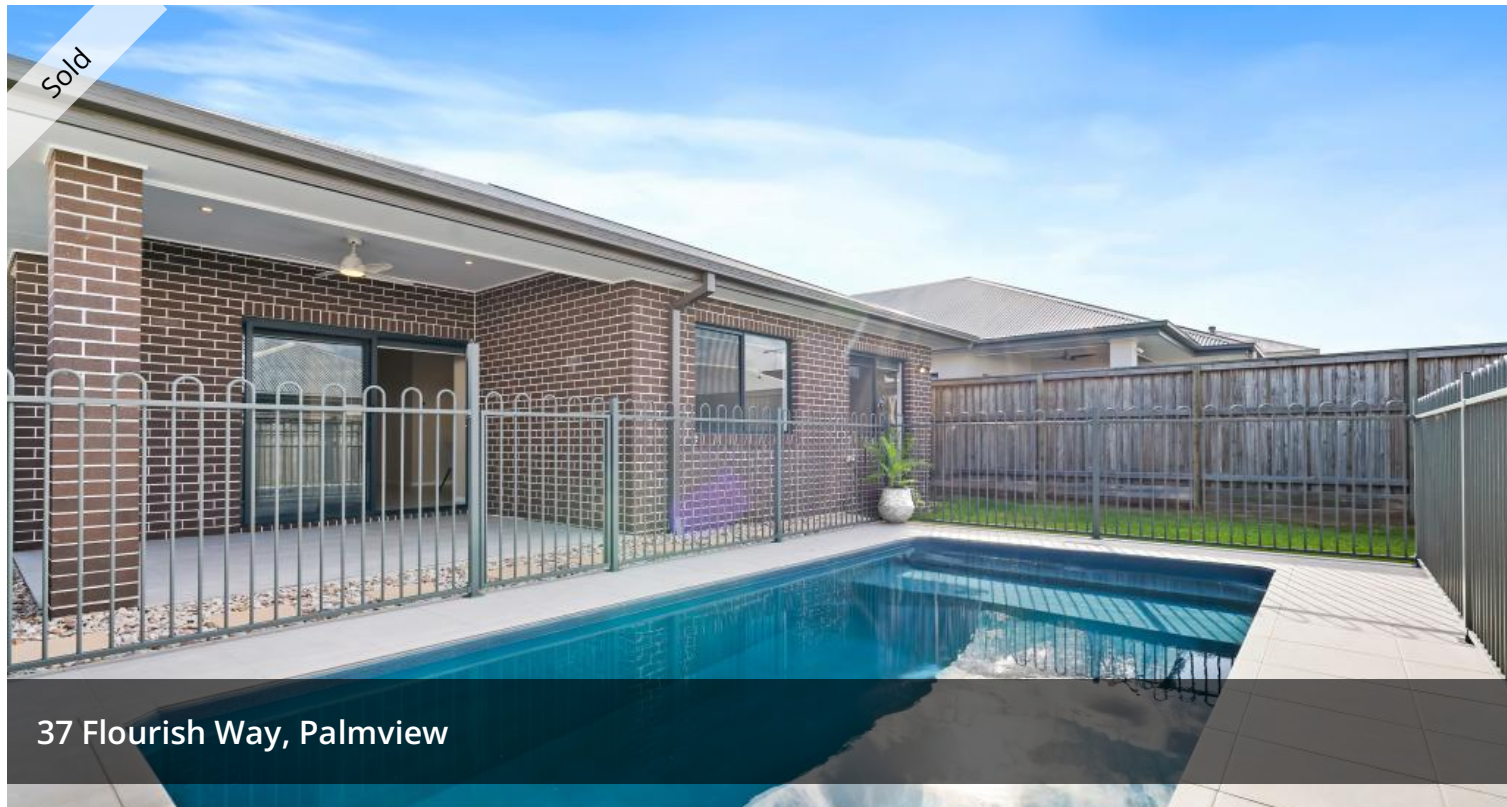
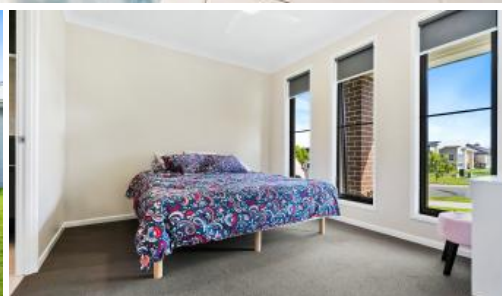


Sold



37 Flourish Way, Palmview



SOLD BY AUSTIN @ BLUE MOON PROPERTY

After receiving multiple offers after the first open inspection, this property has now been sold by Austin @ Blue Moon Property setting a new street record!

Welcome to 37 Flourish Way, a beautifully designed home that offers an exceptional living experience. Every detail has been carefully considered, ensuring optimal use of space with no room left underutilized. The combination of extra-high ceilings and sophisticated finishes creates a sense of grandeur and style that is sure to impress.

Built to the highest standards, this home features finishes typically found in multi-million dollar residences, blending luxury and practicality in perfect harmony.

Step inside and be captivated by the stunning grand hallway and 2.7m high ceilings that extend throughout the home, enhancing both its space and elegance. These soaring ceilings, coupled with an abundance of natural light, create an inviting and airy atmosphere.

The seamless flow between indoor and outdoor spaces is perfect for entertaining. The spacious alfresco area provides year-round comfort, while the sparkling in-ground swimming pool takes center stage as the ultimate feature of the outdoor space.

Property Highlights:

🚗 4 🚿 2 🚘 2 📏 375 m2

Price	SOLD for \$946,500
Property Type	Residential
Property ID	11133
Land Area	375 m2

AGENT DETAILS

Austin Bellingham - 0411953866

OFFICE DETAILS

Sippy Downs
Shop 2B/1 Chancellor Village
Boulevard Sippy Downs, QLD,
4556 Australia
07 5445 6500



- Private, fully fenced 375m² allotment with side access
- Solar power system for energy efficiency
- Ducted Air-conditioning throughout
- Sparkling large in-ground swimming pool surrounded by landscaped pathways & additional yard space
- Luxurious master suite with a spacious walk-in robe featuring custom cabinetry and a stylish ensuite with floor to ceiling tiles
- Spacious media room, ideal for entertaining
- Three additional bedrooms, each with built-in robes
- Grand 2.7m ceilings throughout, paired with extra-tall doors and frames
- Chef's kitchen with stone benchtops, walk-in pantry, 900mm oven and cooktop, and ample storage
- Expansive main bathroom featuring floor to ceiling tiles & a freestanding bath
- Solid brick construction for added durability and insulation

If you're searching for a home that exudes luxury, functionality, and style — one that will impress your family, friends, and most importantly, yourself — this is the perfect choice.

Nestled within the prestigious Harmony Estate, this community spans over 120 hectares of lush open spaces, complete with BBQ areas, playgrounds, and picnic spots. Here, your real estate investment is perfectly complemented by a lifestyle that prioritizes relaxation and outdoor living.

Location Highlights:

- Just a 1-2 minute walk to one of Harmony's largest park featuring a dog park, playground, and basketball court
- Under 5 minutes by car to Palmview State School, local cafes, and Aussie World/Banana Bender Pub
- 15 minutes to Buderim Village, offering shops, Matthew Flinders College, and charming boutiques and cafes
- 10-15 minutes to Sunshine Coast University Hospital and some of Australia's most beautiful beaches
- 20 minutes to Maroochydore CBD, Mooloolaba, and Australia Zoo
- 25 minutes to Sunshine Coast Airport

For further details or to arrange a viewing, contact Austin Bellingham at 0411 953 866 today!

Disclaimer:

While every effort has been made to ensure the accuracy of the information provided, the selling agents do not guarantee its accuracy and accept no liability (express or implied) for any inaccuracies. Prospective buyers are advised to undertake their own due diligence to verify all details within this advertisement.

The above information provided has been furnished to us by the vendor/s. We have not verified whether or not that information is accurate and do not have any belief in one way or the other in its accuracy. We do not accept any responsibility to any person for its accuracy and do no more than pass it on. All interested parties should make and rely upon their own inquiries in order to determine whether or not this information is in fact accurate.

