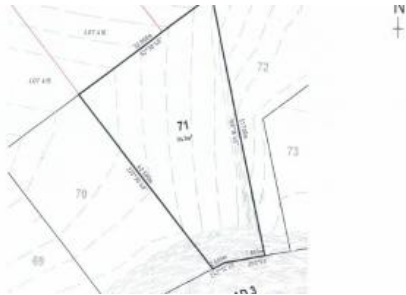


Sold



20 Windward Way, Burrum Heads



FLAT 943M2 BLOCK – REGISTERED AND READY TO BUILD ON

Located in the sought after Dolphin Waters Estate in the quiet coastal community of Burrum Heads, this flat 943m2 block is registered and ready to build on.

With freshwater lakes just meters away, and just a few minute's walk to the sun-kissed sand and clear waters of Burrum Heads, this block would suit those looking for the ultimate coastal location.

A short stroll also takes you directly to National Parkland where you can experience the local wildlife including many species of birds and the local kangaroo families.

All town services available – water, sewer, power and NBN.

You can also hook up the boat and drive a few minutes to one of the towns three boat ramps, providing you with direct access to great fishing in the Burrum River or the open waters of Hervey Bay, the perfect place to go whale watching.

943 m2

Price SOLD for \$295,000
Property Type Residential
Property ID 11150
Land Area 943 m2

AGENT DETAILS

Shane Laraghy - 0434 342 232

OFFICE DETAILS

Sippy Downs
Shop 2B/1 Chancellor Village
Boulevard Sippy Downs, QLD,
4556 Australia
07 5445 6500



This block is located a short distance to Burrum Heads town centre, which has all you need including a tavern, bowls club, convenience store, butcher, bakery, petrol station, doctors and chemist.

Burrum Heads is only a 25 minute drive to Hervey Bay which offers both public and private hospitals and major retail shopping centres along with airport facilities providing direct links to Brisbane and Sydney.

Call Exclusive Marketing Agent Shane Laraghy today on Ph: 0434 342 232 to secure your own piece of paradise.

The above information provided has been furnished to us by the vendor/s. We have not verified whether or not that information is accurate and do not have any belief in one way or the other in its accuracy. We do not accept any responsibility to any person for its accuracy and do no more than pass it on. All interested parties should make and rely upon their own inquiries in order to determine whether or not this information is in fact accurate.