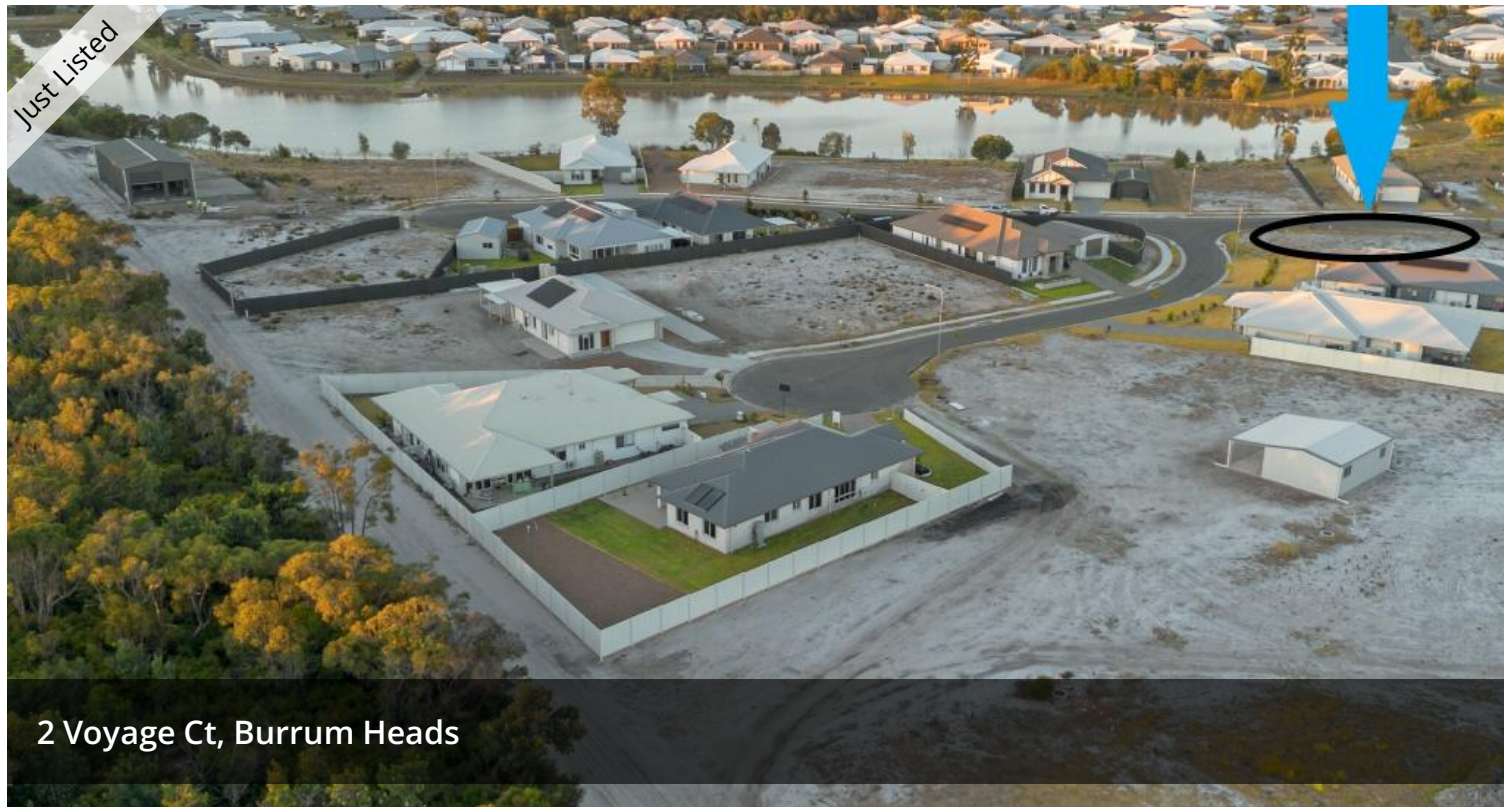
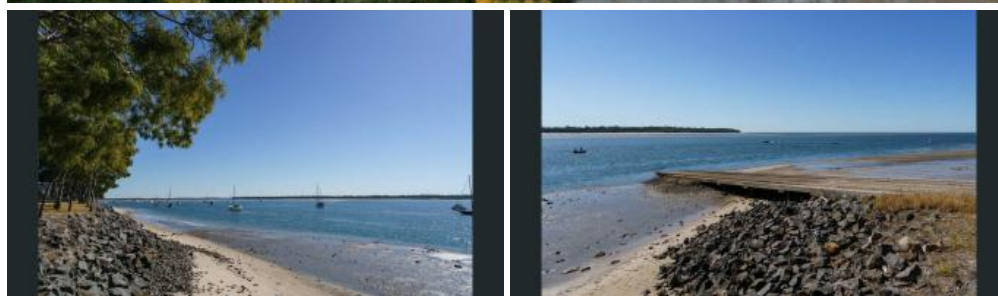


Just Listed



2 Voyage Ct, Burrum Heads



FLAT 800M2 BLOCK – REGISTERED AND READY TO BUILD ON

Located in the sought after Dolphin Waters Estate in the quiet coastal community of Burrum Heads, this flat 809m2 block is registered and ready to build on.

With one freshwater lake just meters away, another freshwater lake across the road, and just a short stroll to the sun-kissed sand and clear waters of Burrum Heads, this block would suit those looking for the ultimate coastal location.

A short stroll also takes you directly to National Parkland where you can experience the local wildlife including many species of birds and the local kangaroo families.

All town services are available – water, sewer, power and NBN.

You can also hook up the boat and drive a few minutes to one of the towns three boat ramps, providing you with direct access to great fishing in the Burrum River or the open waters of Hervey Bay, the perfect place to go whale watching.

This block is located a short distance to Burrum Heads town centre, which has all you need including a tavern, bowls club, convenience store, butcher, bakery, petrol station, doctors and chemist.

Burrum Heads is only a 25 minute drive to Hervey Bay which offers both public and private hospitals and major retail shopping centres along with airport facilities providing direct links to Brisbane and Sydney.

805 m2

Price	\$299,000
Property Type	Residential
Property ID	11557
Land Area	805 m2

AGENT DETAILS

Shane Laraghy - 0434 342 232

OFFICE DETAILS

Hervey Bay and Burrum Heads
1/3 Ivor Drive Burrum Heads, QLD,
4659 Australia
0434 342 232



Call Shane today on Ph: 0434 342 232 to secure your own piece of paradise.

The above information provided has been furnished to us by the vendor/s. We have not verified whether or not that information is accurate and do not have any belief in one way or the other in its accuracy. We do not accept any responsibility to any person for its accuracy and do no more than pass it on. All interested parties should make and rely upon their own inquiries in order to determine whether or not this information is in fact accurate.