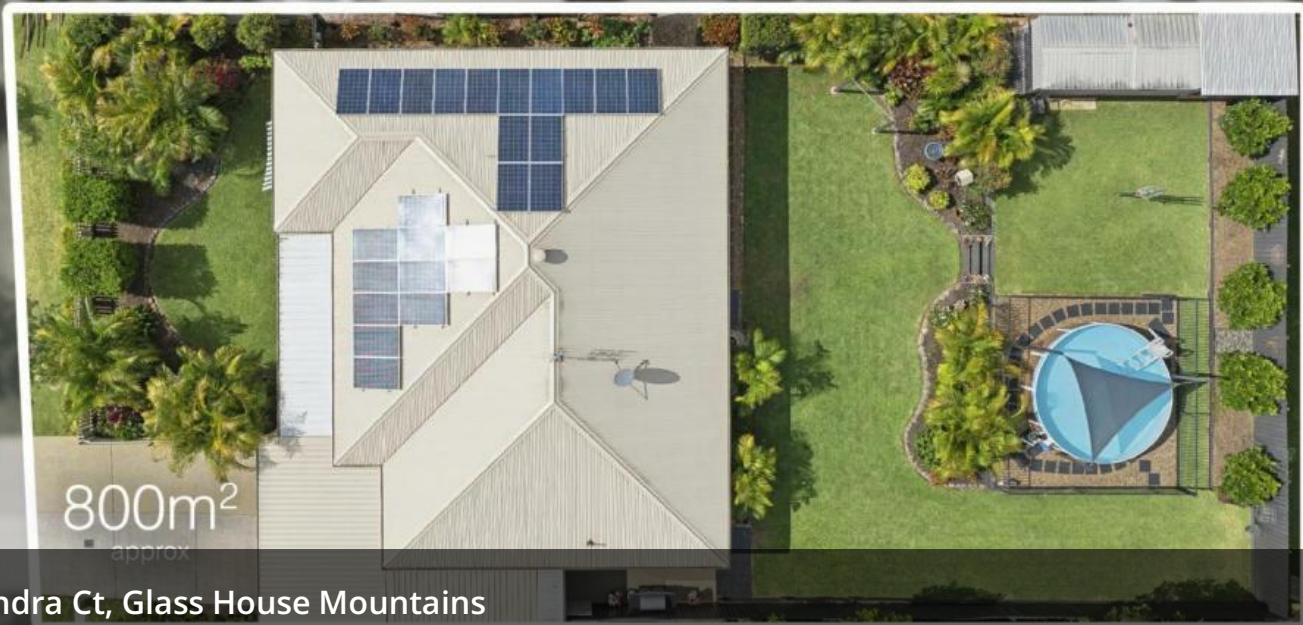


Sold



1 Alexandra Ct, Glass House Mountains

FAMILY FRIENDLY RESIDENCE IN GLASS HOUSE MOUNTAINS

Nathan and Matthew Weir from Ray White Beerwah are proud to introduce 1 Alexandra Court, Glass House Mountains to the market.

Hosting 4 bedrooms, 2 bathrooms, swimming pool, and a shed, this home presents an excellent opportunity. Whether you're looking for a family-friendly residence or a strong investment in a sought-after area, this property is a perfect fit, offering versatility and appeal for a wide range of buyers.

It's ideal location provides convenience and accessibility, making it a highly desirable choice for those seeking both lifestyle and long-term value.

The property is set in the heart of the scenic Glass House Mountains, surrounded by breathtaking views and an abundance of outdoor activities, including hiking, rock climbing, and nature trails. It's just minutes from the local village, offering cafes, a post office, a primary school, and a train station with easy access to Brisbane. A short drive takes you to Beerwah, where you'll find major supermarkets, medical centres, and Australia Zoo. With close proximity to the Bruce Highway, you're only 30 minutes from the Sunshine Coast's pristine beaches and the lifestyle that comes with it!

🏠 4 🚿 2 🚗 2 📏 800m2

Price SOLD for \$892,000

Property Type Residential

Property ID 11646

Land Area 800 m2

AGENT DETAILS

The Weir Twins - 0456697350

OFFICE DETAILS

Mooloolaba
Unit 1 24 Brisbane Rd Mooloolaba,
QLD, 4557 Australia
0754456500



The above information provided has been furnished to us by the vendor/s. We have not verified whether or not that information is accurate and do not have any belief in one way or the other in its accuracy. We do not accept any responsibility to any person for its accuracy and do no more than pass it on. All interested parties should make and rely upon their own inquiries in order to determine whether or not this information is in fact accurate.