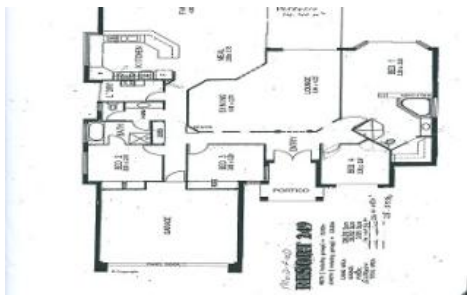


Sold



13 Wellman Crescent, Sippy Downs



**ALL REASONABLE OFFERS BELOW MID 500,000'S WILL BE CONSIDERED!**

Featuring a breathtaking lakeside setting, this quality home has been designed to take full advantage of the north-east panoramic lakeside views. On entering the property you are surrounded by light and the magnificent calming water views. Subtle elegance prevails with spacious interiors, large outdoor patio and salt water pool. With walking track around the delightful lake and parkland setting, this is a fantastic lifestyle location. If you can work from home set up your home office and live in this fantastic location minutes drive to Sunshine Motorway and all major road links.

Situated in one of the most desirable quiet pockets this home will not disappoint.

**Property Features:-**

- Formal Lounge and dining area
- Very spacious family living, dining and spacious kitchen, .with extensive cupboard space and pantry
- Master suite with corner bath, separate shower, walk in robe and beautiful bay windows looking out to pool and lake.
- 2 large bedrooms,
- 1 smaller bedroom/office
- family bathroom, separate powder room, WC and laundry.

🚗 4 🏠 2 🚗 3 🌊 📏 800m2

<b>Price</b>	SOLD
<b>Property Type</b>	Residential
<b>Property ID</b>	1264
<b>Land Area</b>	800 m2

**AGENT DETAILS**

Justin Voss - 0400 822 069

**OFFICE DETAILS**

Sippy Downs  
Shop 2B/1 Chancellor Village  
Boulevard Sippy Downs, QLD,  
4556 Australia  
07 5445 6500



- Solar power, garden shed, side access, salt-water swimming pool.
- Close to shops, restaurants and the Sunshine - Coast University is walking distance.

Rental Appraisal of \$500 per week

Owners moving overseas.

Call me for private inspection.

*The above information provided has been furnished to us by the vendor/s. We have not verified whether or not that information is accurate and do not have any belief in one way or the other in its accuracy. We do not accept any responsibility to any person for its accuracy and do no more than pass it on. All interested parties should make and rely upon their own inquiries in order to determine whether or not this information is in fact accurate.*