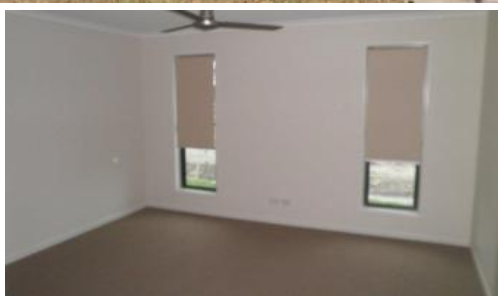


Sold



22 Tibouchina Street, Mountain Creek



## DESIGN, LOCATION, PRICE!

Proudly marketed by Carolyn Lyall

Under offer in 48 hours

Located in the Brightwater Estate of Mountain Creek with walking tracks, school, shops, child care and transport all close by and a family friendly park just across the road!

The home has great street appeal and quality, modern finishes throughout. As soon as you step through the front door it is evident that this is a home built for the family, only two years young this house will not disappoint.

Property consists of:-

- Master bedroom with tasteful ensuite
- Three further bedrooms with built in's
- Large open plan living
- Kitchen with gas cook top and stone bench top
- Family bathroom

🚗 4 🚿 2 🚘 3 📏 600 m2

Price	SOLD
Property Type	Residential
Property ID	1392
Land Area	600 m2

## AGENT DETAILS

Justin Voss - 0400 822 069

## OFFICE DETAILS

Sippy Downs  
Shop 2B/1 Chancellor Village  
Boulevard Sippy Downs, QLD,  
4556 Australia  
07 5445 6500



- Good sized yard with two sheds

Owners motivated to sell, inspections a must.

*The above information provided has been furnished to us by the vendor/s. We have not verified whether or not that information is accurate and do not have any belief in one way or the other in its accuracy. We do not accept any responsibility to any person for its accuracy and do no more than pass it on. All interested parties should make and rely upon their own inquiries in order to determine whether or not this information is in fact accurate.*