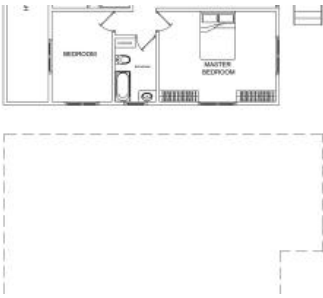


Sold



12 Bundarra Street, Nambour



CHARMING HOME IN CENTRAL POSITION

Don't miss the opportunity to inspect this neat and tidy character home occupying over 600m2 of prime real estate in Nambour. The picturesque home is brimming with character, with beautiful timber floorboards, solid timber doors and ornate picture rails. Two living areas cater to those seeking separation of living, and entertainers are sure to delight in the generous proportions of the covered entertainment area. This is a must to inspect to appreciate this very special place to call home.

Property consists of:

- 2 spacious living areas
- Delightful timber flooring
- Log fireplace
- Spacious kitchen
- Laundry
- Family bathroom
- 3 good sized bedrooms
- 2nd toilet
- Solar hot water
- Delightful gardens and undercover patio
- Single lock up garage with large storage space

Rental Appraisal on request

🚗 3 🏠 1 🚗 2 📏 607m2

| | |
|----------------------|-------------|
| Price | SOLD |
| Property Type | Residential |
| Property ID | 1880 |
| Land Area | 607 m2 |

AGENT DETAILS

Justin Voss - 0400 822 069

OFFICE DETAILS

Sippy Downs
Shop 2B/1 Chancellor Village
Boulevard Sippy Downs, QLD,
4556 Australia
07 5445 6500



Bundarra Street is a short walk to local shops and restaurants and a 10 minute drive to private and public schools and hospitals. If you want to spend the day at the beach 15-20 minutes will have you relaxing on Mooloolaba beach or if you prefer a day in the hinterland townships of Montville and Maleny they are also a short drive from this must inspect property.

The above information provided has been furnished to us by the vendor/s. We have not verified whether or not that information is accurate and do not have any belief in one way or the other in its accuracy. We do not accept any responsibility to any person for its accuracy and do no more than pass it on. All interested parties should make and rely upon their own inquiries in order to determine whether or not this information is in fact accurate.