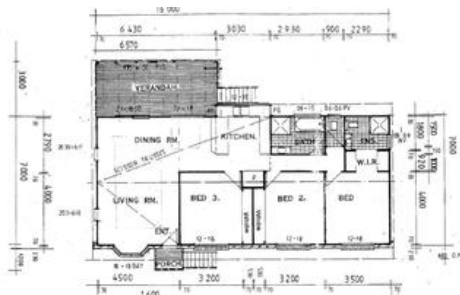


Sold



31 Leigha Place, Kureelipa



A LITTLE PIECE OF PARADISE MINUTES FROM MAPLETON

Immaculately presented, with fabulous views over the valley towards the Coast, you can immerse yourself in the peace and tranquillity of your surroundings and with just over an acre (4346m²) of beautiful gardens and forest, this family home is a must to see.

A spacious quality built home with high ceilings over polished timber floors, fireplace and air conditioning this all adds up to a very appealing place to live.

The well-appointed kitchen flows perfectly with both indoor and outdoor living, plenty of bench space and breakfast bar leading to the open plan dining and lounge areas. The sunroom which encapsulates the beautiful view, is the perfect place to sit, relax and just enjoy your surrounds. There are three spacious bedrooms with built in robes and ceiling fans, ensuite to main and second bathroom in that is in pristine condition. Downstairs, there is every man's dream, not one but two man caves that could easily be converted to a granny flat or perfect for a home handyman business. The possibilities are endless.

The above information provided has been furnished to us by the vendor/s. We have not verified whether or not that information is accurate and do not have any belief in one way or the other in its accuracy. We do not accept any responsibility to any person for its accuracy and do no more than pass it on. All interested parties should make and rely upon their own inquiries in order to determine whether or not this information is in fact accurate.

3 2 2

Price SOLD for \$555,000
Property Type residential
Property ID 2565
Land Area 4,346 m²

AGENT DETAILS

Jennine Keir - 0414 851 531

OFFICE DETAILS

Sippy Downs
Unit 11 1 Scholars Dr Sippy Downs
QLD 4556 Australia
07 5445 6500

