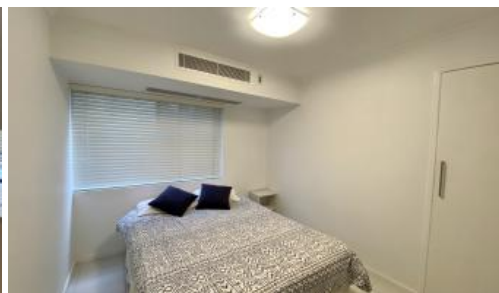
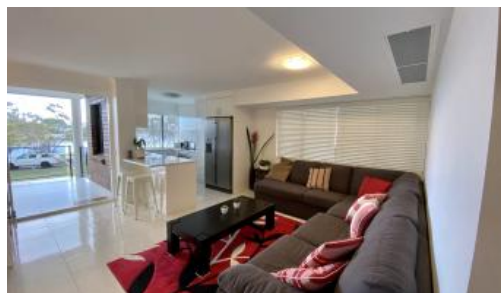


Leased

Unit 4, 93 Parkyn Pde, Mooloolaba



MOOLOOLABA WATERFRONT FULLY FURNISHED

Perfectly positioned overlooking the Mooloolah River to the South and opposite Mooloolaba main beach to the North. Amazing views from the second level apartment which occupies a valuable location in a small complex of just 6 apartments. The secure gated complex has undercover parking and easy access up one flight of stairs to the immaculate fully furnished 2 bedroom unit. A low maintenance lifestyle awaits with generous sized bedrooms and well apportioned open plan living. A sheltered balcony is the perfect place for all meals to be shared, as it benefits from the water views over Penny Lane to the River. The valuable location is also a very short walk to Mooloolaba Surf club and the cafes of the esplanade. (Due to the current restrictions on open homes we will only be showing the property to tenants who have driven past the property and call us to make a private inspection). Please call 5445 6500 to view.

The above information provided has been furnished to us by the vendor/s. We have not verified whether or not that information is accurate and do not have any belief in one way or the other in its accuracy. We do not accept any responsibility to any person for its accuracy and do no more than pass it on. All interested parties should make and rely upon their own inquiries in order to determine whether or not this information is in fact accurate.

🚗 2 🚿 1 🚗 1

Price	Contact Agent
Property Type	Rental
Property ID	3062

AGENT DETAILS

Indiana Voss - 0404 155 581

OFFICE DETAILS

Sippy Downs
Shop 2B/1 Chancellor Village
Boulevard Sippy Downs, QLD,
4556 Australia
07 5445 6500

