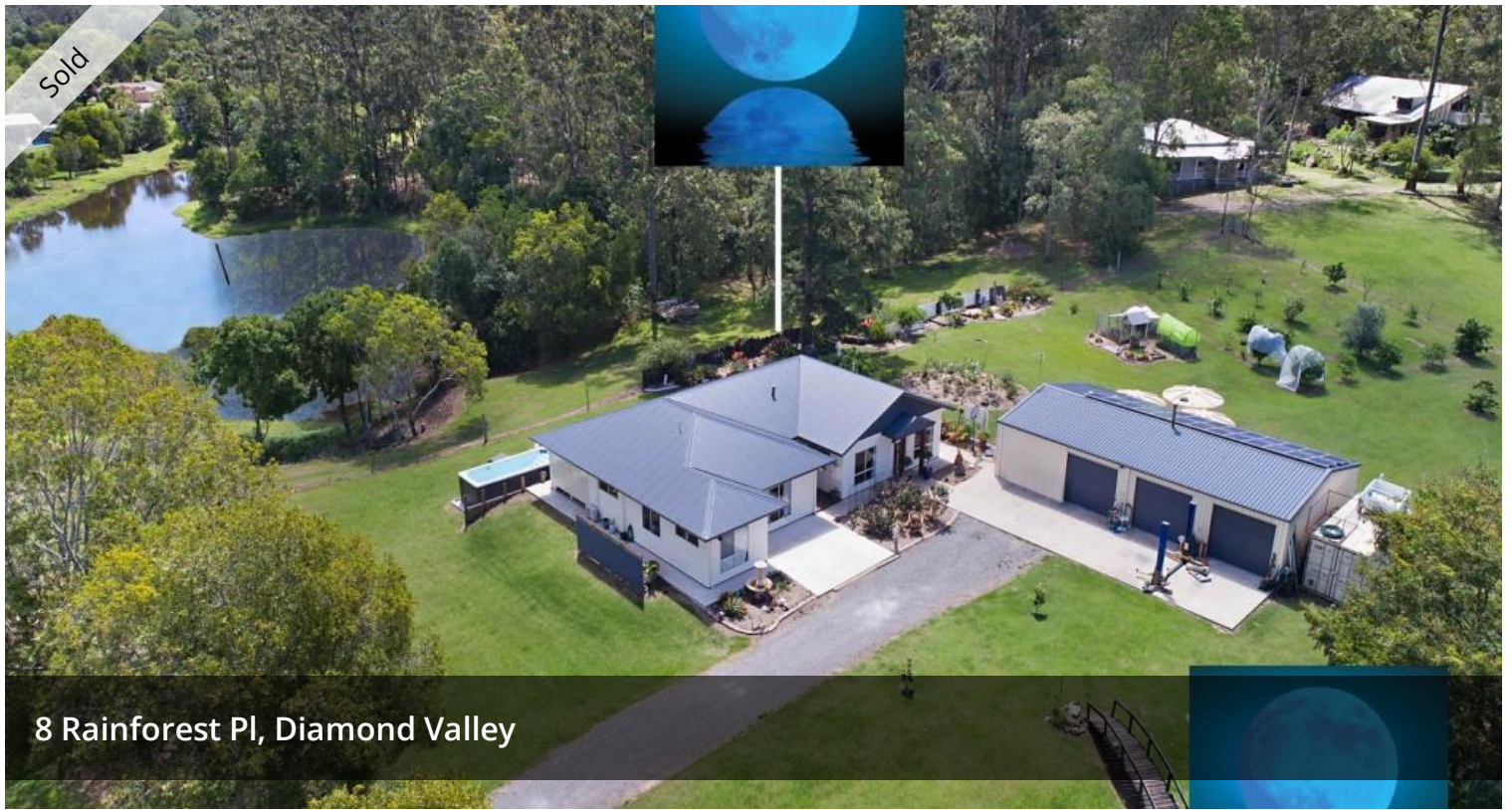


Sold



8 Rainforest Pl, Diamond Valley



PRISTINE PRIVACY ON 5117SQM

Scott Radmall of Blue Moon Property proudly presents to the market 8 Rainforest Place, Diamond Valley.

Perfectly located in the picturesque Diamond Valley in the Sunshine Coast Hinterland just minutes from the Mooloolah Valley Township, you will wake up to birds and be surrounded by nature and wildlife with views over a large dam and the Blackall Range as a beautiful backdrop. Spend time relaxing on the expansive undercover alfresco area spanning the entire length of the house without a neighbour to be seen. This location is perfect for anyone wanting privacy and peace and quiet.

This modern contemporary residence features four spacious bedrooms all with built-ins, two modern bathrooms, split system air-conditioning units, two separate living areas which both lead onto the huge alfresco entertaining area. The property is situated on the high side of the street and has a real wow factor as you enter the property.

What we love about the property:

- Beautiful family home in sought after Diamond Valley
- 4 Spacious bedrooms all with built-ins - Well equipped modern kitchen overlooking undercover patio area with huge walk in butlers pantry - Fully useable, 5,117 sqm allotment with low maintenance gardens and well manicure level lawns -Wide selection of fruit trees including oranges, lemons, mandarine, plums, peaches, nectarines, limes and olive trees - Huge storage shed with power further accommodating up to 6 vehicles

🚗 4 🏠 2 🚗 6 📏 5,117m²

Price SOLD for \$840,000

Property Type Residential

Property ID 3926

Land Area 5,117 m²

AGENT DETAILS

Indiana Voss - 0404 155 581

OFFICE DETAILS

Kawana Waters
Shop 4 5 Bermagui Crescent
Buddina Buddina, QLD, 4575
Australia
0400822069



with extra concrete hardstand areas perfect to store the caravan, boat or trailer. -Plenty of storage space throughout the house with additional storage to mezzanine level in shed

-6 kilowatt solar panel system to keep the electricity bills to a minimum - Large water storage capacity with 3 x 22,500 litre rain water tanks -Swim in the pool while appreciating expansive range side and dam views - Highly sought after private and peaceful location of Diamond Valley situated on a very quiet street -Close to Mooloolah Valley local shops, community pool and schools -Beautiful rural outlook over neighbouring dam with Blackall Range backdrop -Bike and walking tracks are located close by -Low maintenance, easy living just move straight in

Come home to peace and quiet and enjoy the best of both worlds living a peaceful rural lifestyle while still being only 25 minutes from the beautiful beaches of Caloundra, just 20 minutes to Maleny, 5 minutes to the train station at Mooloolah Valley and an hour to Brisbane airport having easy access to Sunshine Coast services and the Bruce Highway.

Only an inspection can reveal the true character of this beautiful property. Seeing is Believing. Please get in touch with Scott to organise your private inspection.

The above information provided has been furnished to us by the vendor/s. We have not verified whether or not that information is accurate and do not have any belief in one way or the other in its accuracy. We do not accept any responsibility to any person for its accuracy and do no more than pass it on. All interested parties should make and rely upon their own inquiries in order to determine whether or not this information is in fact accurate.