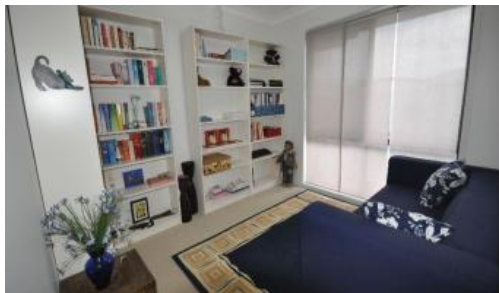


Sold



Murrumba Downs



## MURRUMBA DOWNS HOME ON OVER 1100M<sup>2</sup> IN PINEAPPLE RIDGE ESTATE

Opportunity knocks to secure one of the last of the large blocks in the area. This size block is soon to be a thing of the past with lot sizes getting smaller and smaller. Located on 1149m<sup>2</sup> of land this home has a large entertaining area, shed for the big toys and side access to the backyard. Inside you will find 2 large living areas with high vaulted ceilings and a study nook conveniently located near the kitchen, 4 spacious bedrooms, a study, a DLUG with storage area,. The well appointed kitchen has a large free standing oven with gas cook top. The massive living room opens out onto a large under-roof outdoor entertaining area which is fantastic for when family and friends drop over.

- 1149m<sup>2</sup> block
- Shed
- Ducted air-conditioning
- Vaulted ceilings
- Under-roof entertaining area
- Side access
- Walk to schools
- Walk to bus
- 5 minutes from Westfield North Lakes
- Easy access to the highway

Incredible value!

🚗 4 🚿 2 🚗 2 📏 1,149 m2

Price	SOLD
Property Type	Residential
Property ID	4502
Land Area	1,149 m2

### AGENT DETAILS

Nigel Lucas - 0413 351 603

### OFFICE DETAILS

North Lakes  
SHOP 15 9 Discovery Dr North  
Lakes, QLD, 4509 Australia  
0413351603



A copy of the Sustainability Declaration is available from our office

*The above information provided has been furnished to us by the vendor/s. We have not verified whether or not that information is accurate and do not have any belief in one way or the other in its accuracy. We do not accept any responsibility to any person for its accuracy and do no more than pass it on. All interested parties should make and rely upon their own inquiries in order to determine whether or not this information is in fact accurate.*